



Music Basics (part 1) _____

THE STAFF AND THE MUSICAL ALPHABET

Period (circle): 1 2 3 4 5 6 7 8

INTRODUCTION:

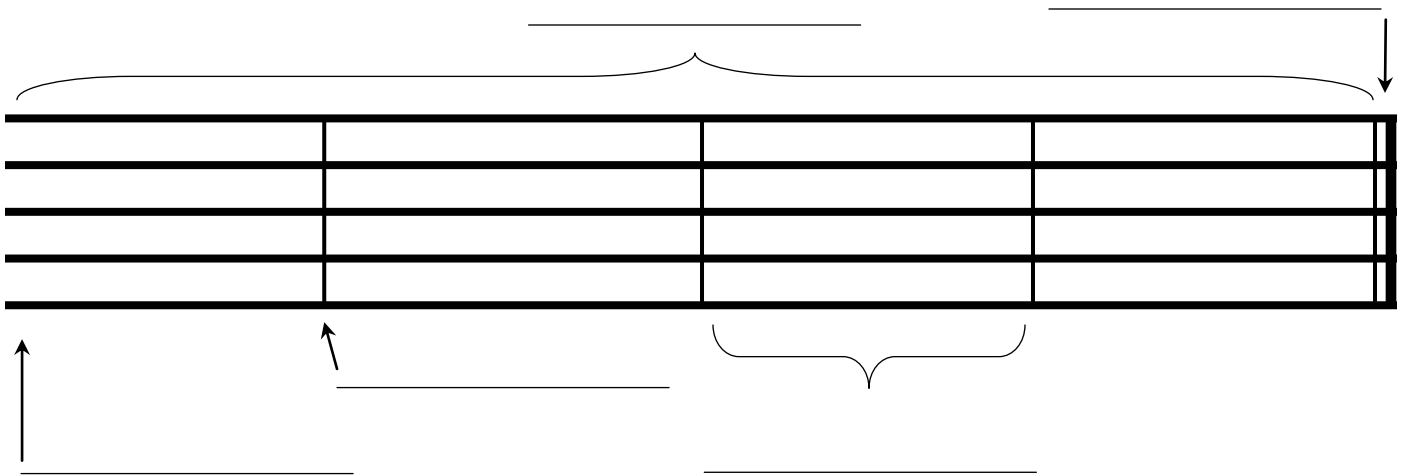
‘Music Theory’ is the study of how music works. When you learned to read there were steps you took like learning the alphabet, putting letters together to make words, sounding out words, and eventually making sentences. Music is a new language and the better you are at these basics the easier your year will be!

THE STAFF:

The staff is the foundation of reading music. **Parts of the staff** (key words are in bold)

**label each part of the staff as you learn them*

- ❶ The **staff** is made of _____ horizontal (side to side) lines. Line 1 is at the bottom and line five is at the top. In music we will assign letter names to both the lines *and* the spaces.
- ❷ **Bar lines** are vertical lines that break the staff into smaller parts—similar to how a period breaks sentences in a paragraph.
- ❸ A **Measure** is the _____ between two bar lines.
- ❹ The **Clef** decides what the _____ of the lines and spaces are. The clef is always the first thing on the staff.
- ❺ The **Double Bar** is always at the _____ of the staff. The double bar is made of one regular bar line and one thicker bar line.



CLEFS:

There are multiple clefs used in music. The most common clefs used in band are the **Treble** and the **Bass** clef. Below are the instruments in band. Mark a **T** if it is Treble Clef and a **B** if it is Bass Clef.

Woodwind Family: Flute ___ Oboe ___ Bassoon ___ Clarinet ___ Saxophone ___

Brass Family: Trumpet ___ Horn ___ Trombone ___ Euphonium ___ Tuba ___

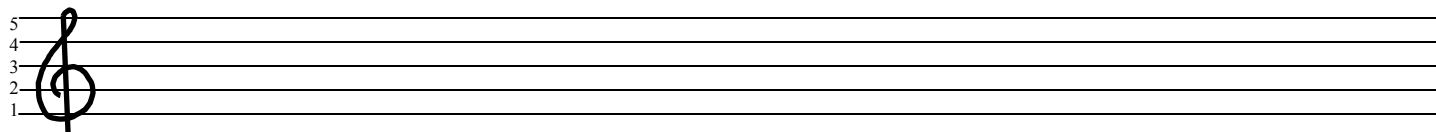
Percussion: Mallets (*all instruments that look like a piano*) ___ Timpani ___

Continued on next page

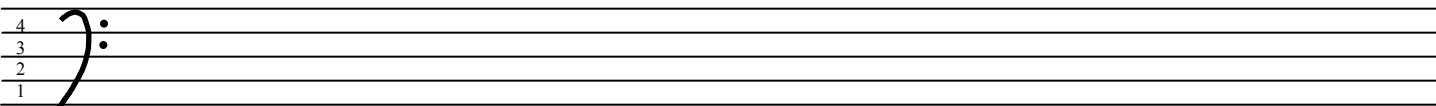
Music Basics (pt. 1) Continued

PENCIL PRACTICE- DRAWING THE CLEFS:

The **treble clef** takes up the whole staff. Notice the big loop touches the 1st and 3rd line.



The **bass clef** is a curved line with two dots. Notice the two dots are on 3rd and 4th space.



If you want to practice more just find any paper and draw five lines on it!

MUSICAL ALPHABET

In music, we only use _____ through _____. (there is no 'H' note!)

- ➊ Forward goes **up** the staff. (line 1 **up** to line 5)
- ➋ Backwards goes **down** the staff. (line 5 **down** to line 1)
- ➌ The musical alphabet _____ over and over both ways
Going up: ABCDEFGABCDEFGABC.... Going down: GFEDCBAGFEDCBAGFE...

🎵 ACTION: CAN YOU 'MASTER THE ALPHABET'?

- ➊ Practice saying the MUSICAL alphabet **forwards** (remember there is no H to Z!). REPEAT!!!
 - ➋ Practice saying the MUSICAL alphabet **backwards** .
 - ➌ Going **forwards** start the musical alphabet on **A** then **B** then **C** then **D** then **E** then **F** then **G**.
 - ➍ Going **backwards** start the musical alphabet on **G** then **F** then **E** then **D** then **C** then **B** then **A**
- 🕒 Get a stop watch and see how fast you can make THREE rotations starting on EACH LETTER! Be ready to challenge other band members!!!

Want more theory practice? Look at www.musictheory.net for more information. On the 'Lessons' tab click the first lesson (The Staff, Clefs, and Ledger Lines). This lesson will review the information on this page as well as give you a preview of Music Basics part 2!